

Flat River Watershed Council

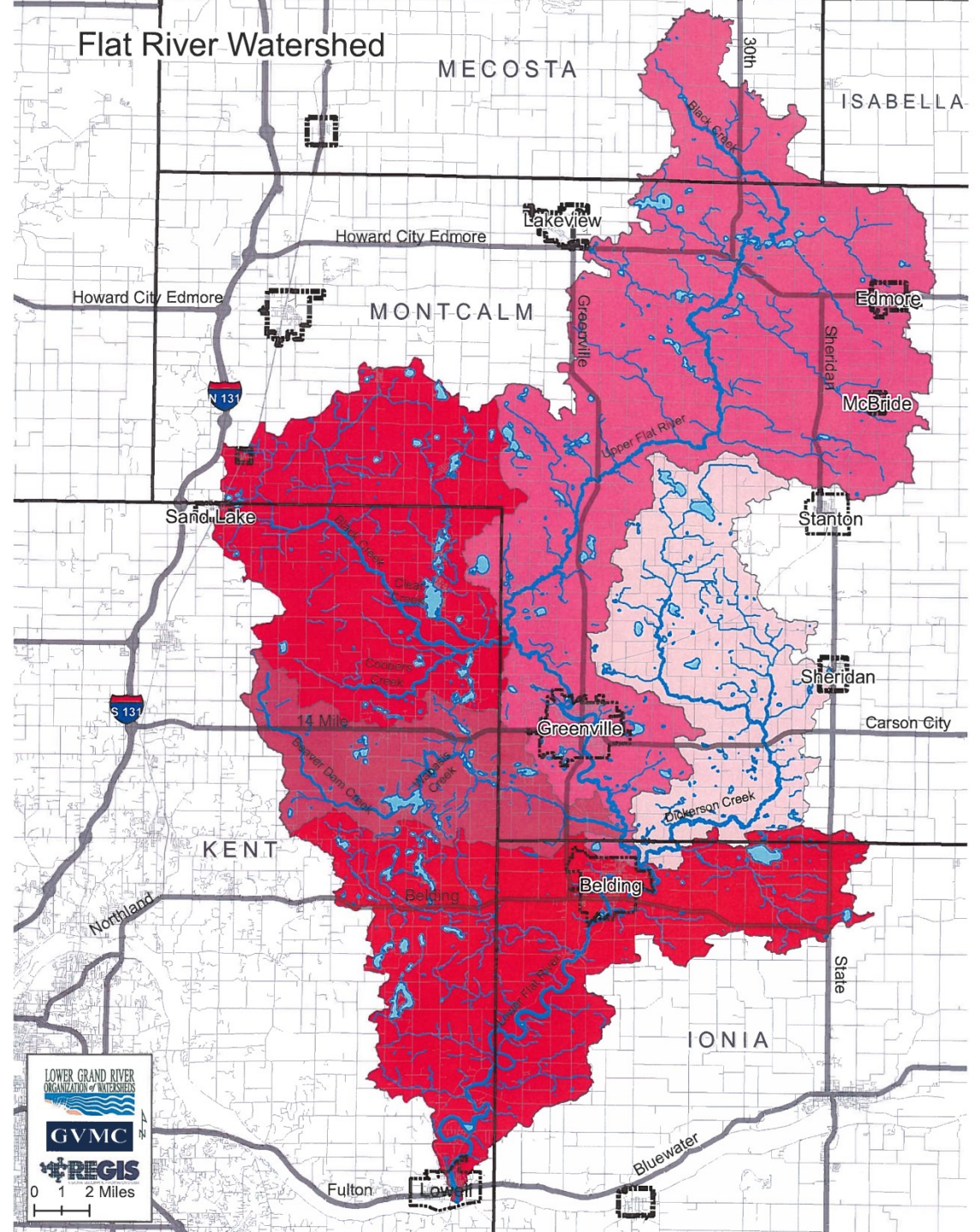


Our Purpose:

To protect, enhance, and maintain land and water quality, and other natural resources.

989-831-4212 x 105

Find us on Facebook 



Montcalm Conservation District

Mission Statement:

Enhancing Montcalm County's natural resources through conservation education, outreach, and partnerships.



989-831-4212 x 105

77 S. State St. Stanton, MI 48888

www.montcalmcd.org

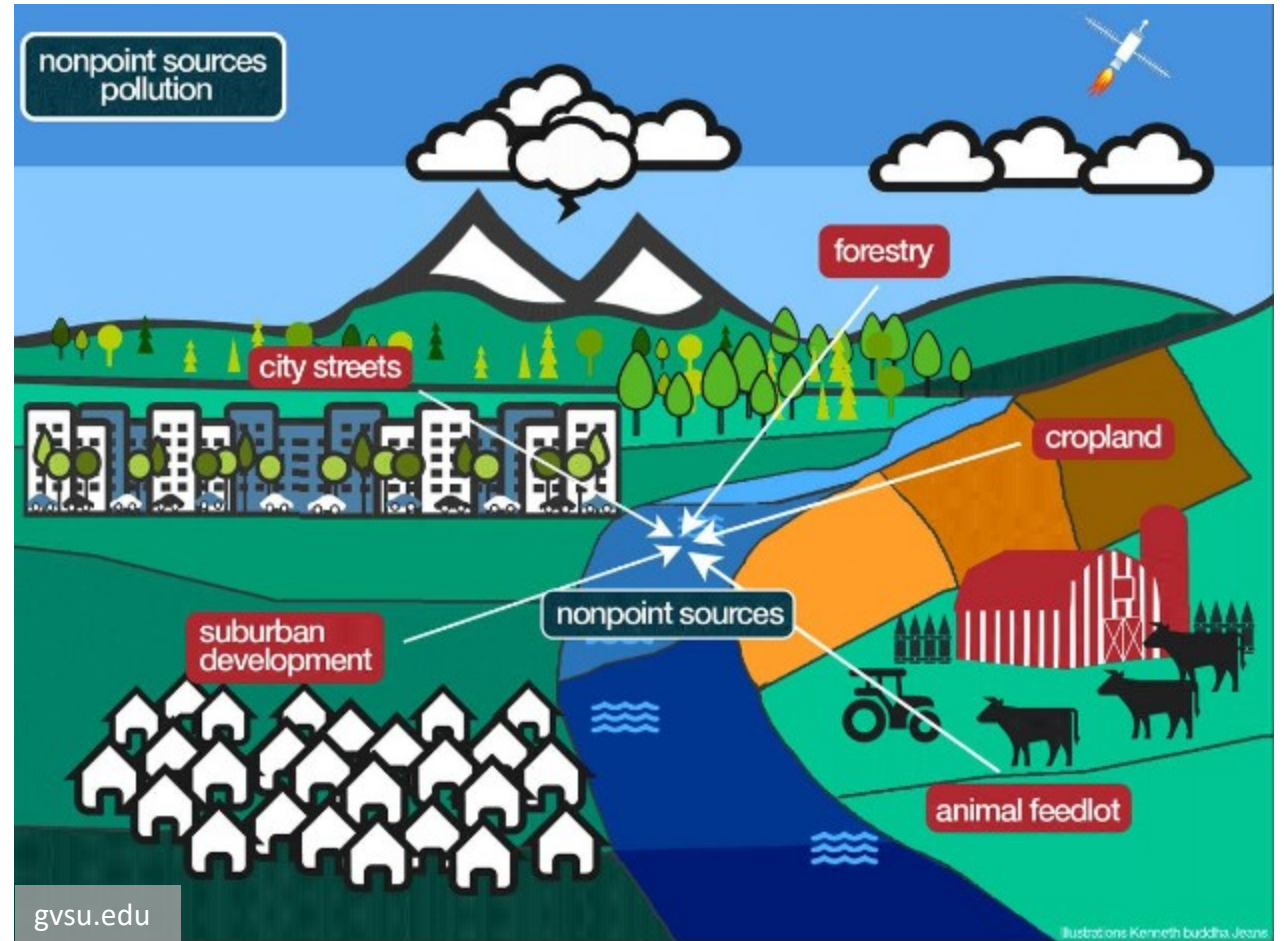
Find us on Facebook 



EGLE 319 Non-Point Source Pollution Grant

Non-Point Source (NPS) pollution occurs when precipitation or wind carries pollutants from the land into the water bodies.

Grant funds are used to protect / improve water quality.



EGLE 319 Grant: Water Quality in the Flat River

- 1) Conservation Easement in High Biodiversity Area**
- 2) Natural River Act Ordinance Adoption**
- 3) Septic Education Mailers & Workshops**
- 4) Farmer-Led Workgroups**
- 5) Agricultural BMPs**
- 6) Natural Shoreline Installation**

EGLE 319 Grant: Water Quality in the Flat River

1) Conservation Easement in High Biodiversity Area

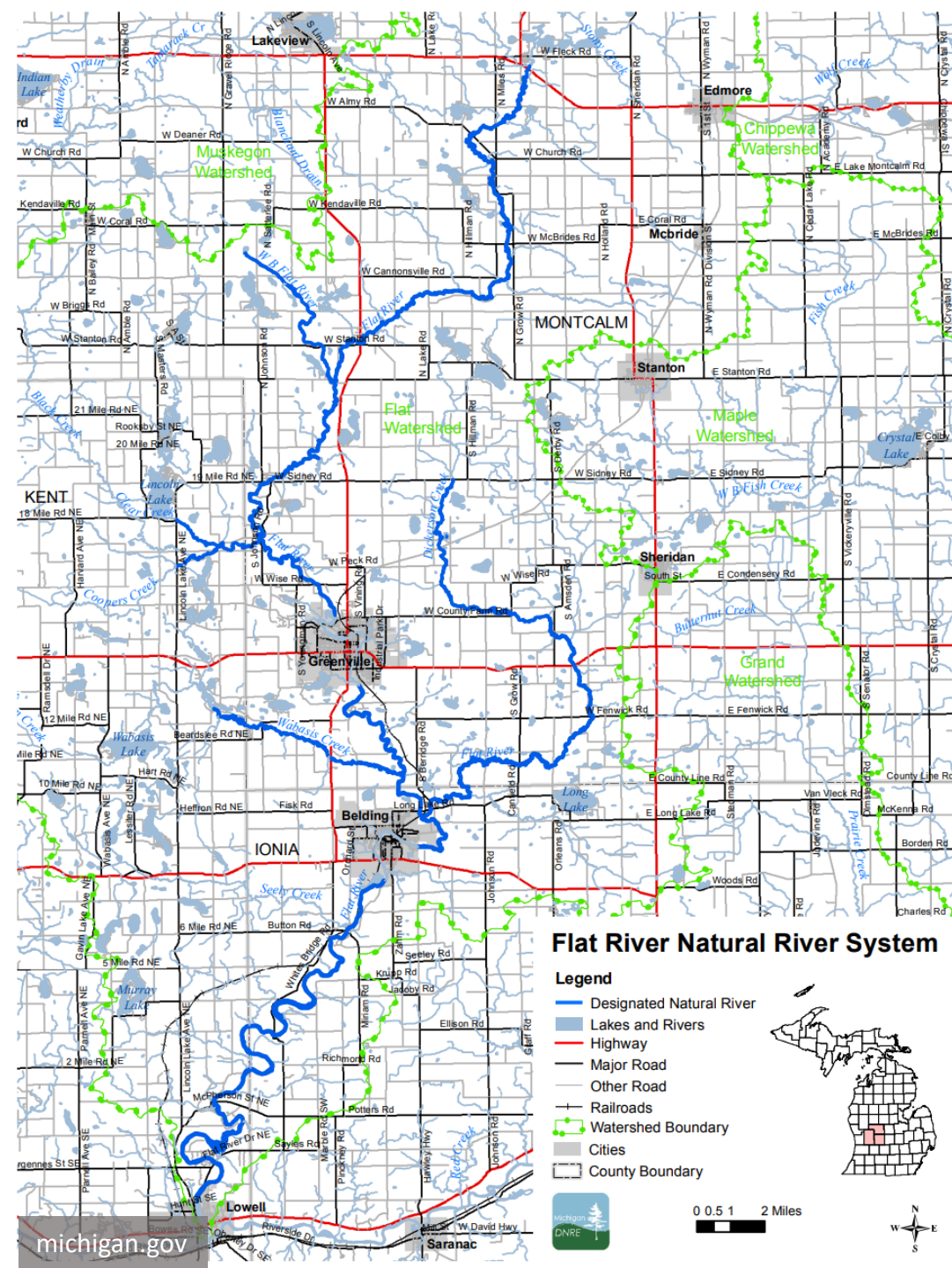


Conservation Easement:
A legal agreement between the land owner and government agency that restricts the quantity and type of development that can take place.

EGLE 319 Grant: Water Quality in the Flat River

2) Natural River Act Ordinance Adoption

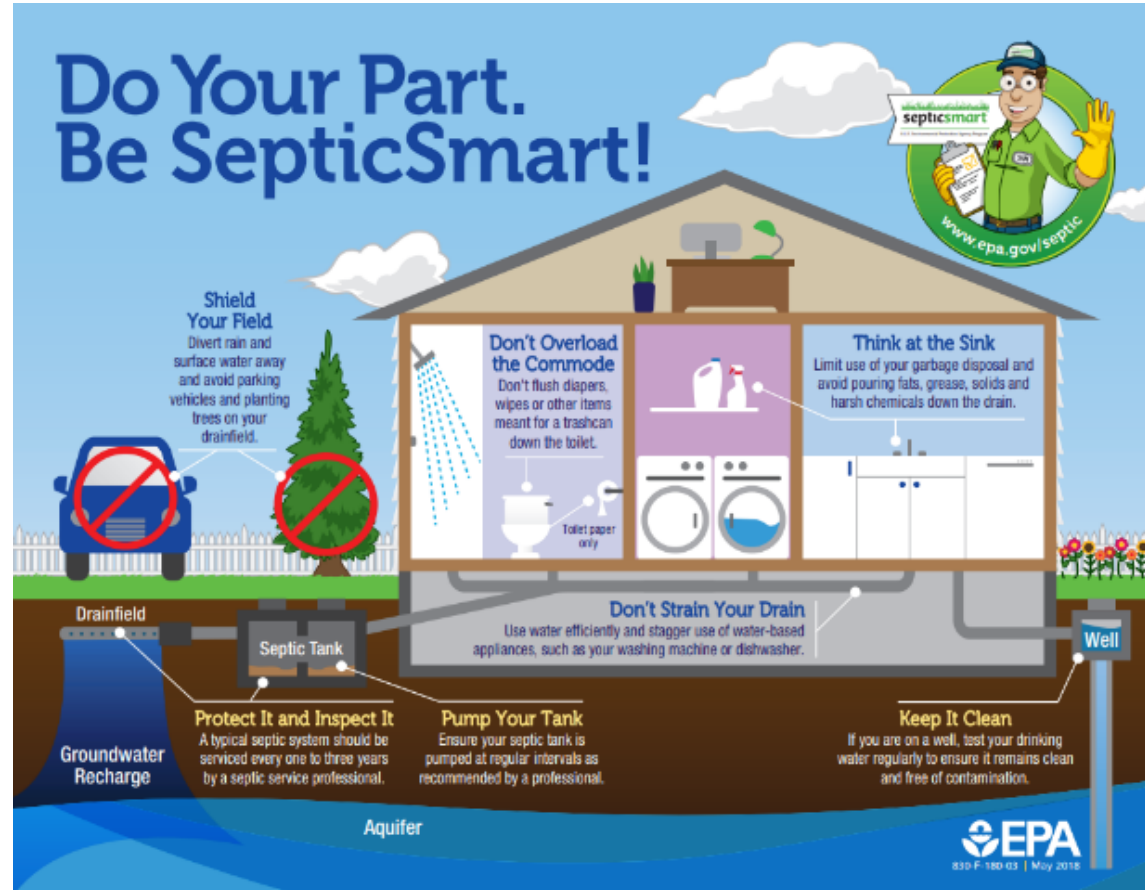
Natural River – a river designated by DNR for its wild, scenic, and recreational value.



EGLE 319 Grant: Water Quality in the Flat River

3) Septic Education Mailers & Workshops

Improperly managed septic systems are polluting the Flat River and its tributaries with E. coli from human waste.



EGLE 319 Grant: Water Quality in the Flat River

4) Farmer-Led Workgroups



EGLE 319 Grant: Water Quality in the Flat River

5) Agricultural Best Management Practices (BMPs)



Benefits

- Reduce Erosion
- Reduce & Filter Runoff
- Recycle Nutrients

EGLE 319 Grant: Water Quality in the Flat River

6) Natural Shoreline Installation





© Gary Alan Nelson

Common Fish in the Flat River

Bass



Catfish



Trout



Crappie



Carp



Walleye



Pike



Sunfish





Listed Fish & Plants in the Flat River

Pugnose Shiner (Endangered)



River Redhorse (Threatened)



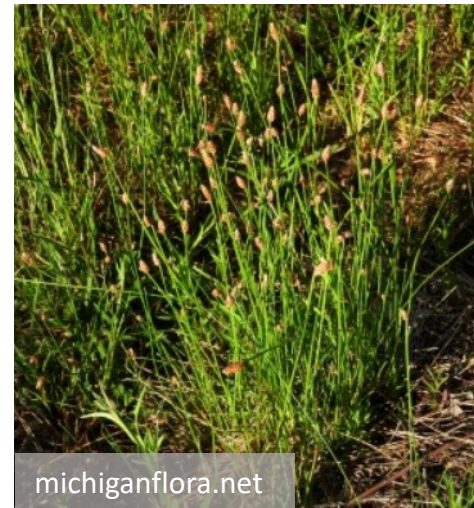
Bald-Rush (Threatened)



Cut-Leaved Water Parsnip (Threatened)



Black-Fruited Spike-Rush (Special Concern)



Dwarf Bulrush (Special Concern)





**Listed
Plants in
the Flat
River**

**Prairie
False Indigo
(Special Concern)**



**Hairy-Fruited Sedge
(Special Concern)**



**Prairie Buttercup
(Threatened)**



**Virginia Bluebells
(Endangered)**



**Stiff Gentian
(Threatened)**



**Fringed Orchid
(Threatened)**



**Kitten-tails
(Endangered)**



Goldenseal (Threatened)





Blanding's Turtle
(Special Concern)

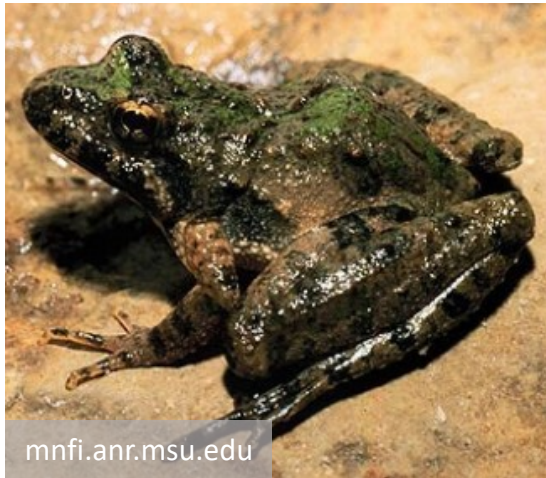


Listed Reptiles & Amphibians in the Flat River

Eastern Massasauga Rattlesnake
(Special Concern)



Blanchard's Cricket Frog
(Threatened)



Wood Turtle
(Special Concern)



Eastern Box Turtle
(Special Concern)





Listed Mussels in the Flat River

Cylindrical Papershell
(Special Concern)



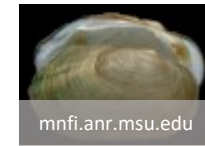
Ellipse
(Special Concern)



Slippershell
(Threatened)



Lilliput
(Endangered)



Rainbow
(Special Concern)



Black Sandshell
(Endangered)



Purple Wartback
(Threatened)



Round Pigtoe
(Special Concern)



Snuffbox
(Endangered)



Elktoe
(Special Concern)





Invasive Plants & Algae in the Flat River

Flowering Rush



European Frogbit



Holly-Leaf Waternymph



Narrow-Leaved Cattail



Eurasian Water Milfoil



Purple Loosestrife



Yellow Floating-Heart



Starry Stonewort





Invasive Plants & Algae in the Flat River

Curly-Leaf Pond Weed



Reed Canary Grass



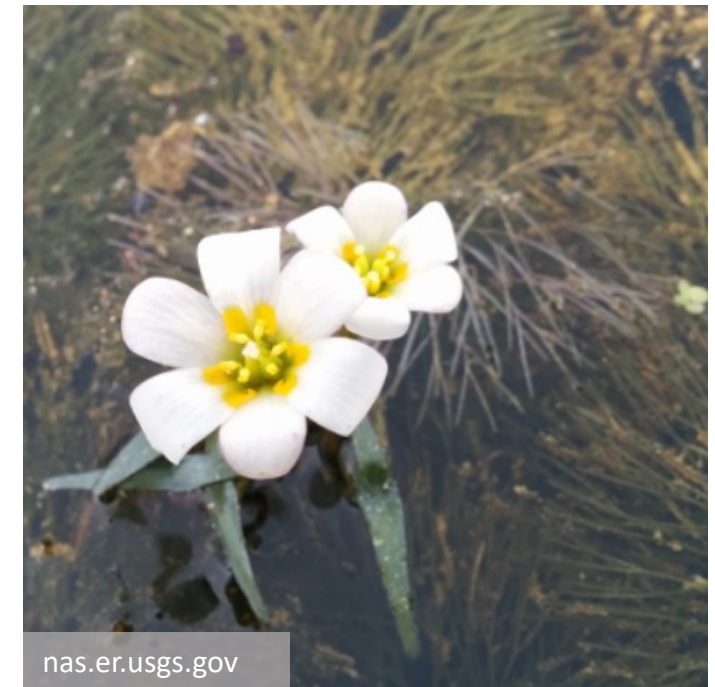
Yellow Iris



Creeping Yellow Cress



Carolina Fanwort





Invasive Fish in the Flat River System

Round Goby



Rainbow Trout



White Perch



Common Carp



Gizzard Shad



Flathead Catfish





Invasive Species in the Flat River

Zebra Mussel



Sea Lamprey



Asian Clam



Mute Swan



Banded Mystery Snail



Freshwater Jellyfish



Rusty Crayfish



